



SCOTT FREE

(AUST) PTY LTD

your industry partner

www.scottfreeaust.com.au

KEW

FEATURES & BENEFITS



ROLLER



ROMAN



PANEL



Width:	3000mm
Composition:	100% Polyester
Weight:	Approx. 433gsm
Thickness:	0.47mm
Coating:	Blockout coated with Acrylic Foam
Opacity:	Blockout tested to AS-2663-1999
Light Fastness:	>6 (Blue wool scale), Fully Fade Resistant
Fire Retardant:	Product is designed and manufactured to comply with Building Code of Australia requirements for class 2 to 9 buildings. Tested to AS1530.3
Protection:	Mould & Mildew Protection
Cleaning:	Wipe clean with warm soapy water, and damp cloth.



SCOTT FREE
(AUST) PTY LTD
your industry partner

www.scottfreeaust.com.au

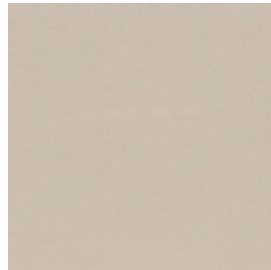
KEW

FABRIC COLOURS

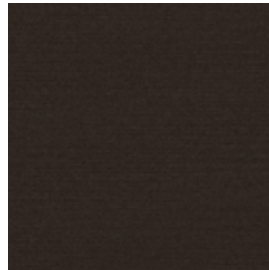
Colours may vary slightly from the swatch or digital sample. All variations are within industry standards.



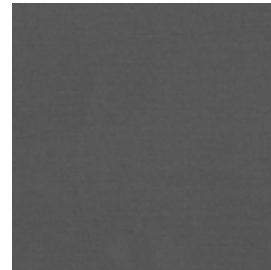
BARK



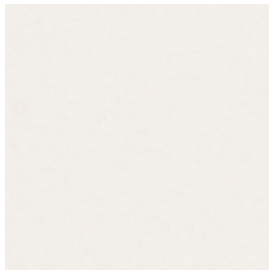
CLAY



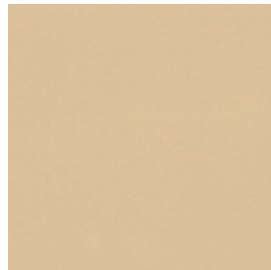
EARTH



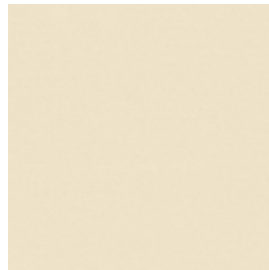
FLINT



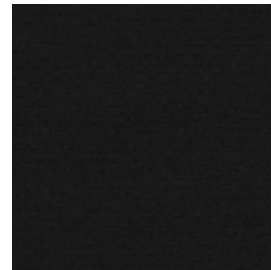
NATURAL



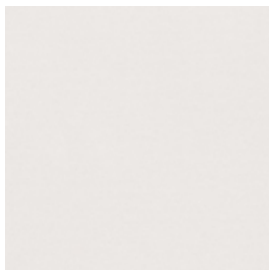
OAK



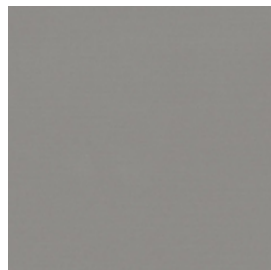
OATMEAL



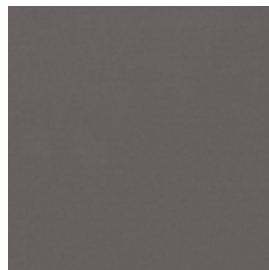
ONYX



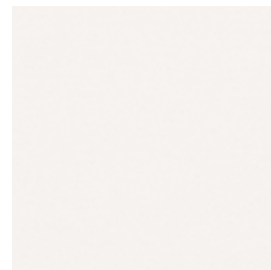
PEBBLE



PEWTER



TOBACCO



WHISPER



ORCA
(WHISPER WITH FLINT BACK)